



**BRAMPTON
HARDWOOD FLOORS**

Installing Floating Engineered Flooring How To Series Brochures



Installing Floating Engineered Hardwood Flooring

✓ Buy enough material

Be sure to add enough extra boards for waste and cutting. Buy 5% more for a regular install and 10% for installation of boards set at 45 degrees.



Tips & Techniques

Buying extra material will ensure that you will have boards for any future repairs!

✓ Acclimate material

All engineered floors should be put in the house where it is to be installed 3-5 days prior to installation.



Tips & Techniques

Leave the packages unopened and don't stack too many boxes on top of each other!

✓ Prepare Subfloor

Check for levelness in sub floors. On concrete sub floors add floor leveler in lowspots. On wooden sub floors, check for squeaks and screw down sub floor.

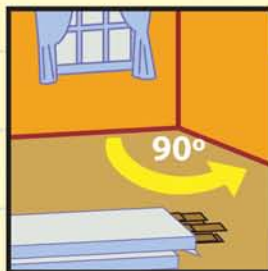


Tips & Techniques

Premixed floor levelers can be added to sub floor to attain levelness!

✓ Determine layout and starting point

Check room for squareness and establish starting row next to square wall. Install along the long side of the room.



Tips & Techniques

Use the outside wall of the room as a reference, it's usually the straightest wall in the house!

Installing Floating Engineered Hardwood Flooring

✓ Get necessary tools

Chalk line & nail set, tape measure, glue, tapping block, shims/spacers, foam underpad, miter saw, table saw, back saw/door jam cutter, safety glasses & dust masks

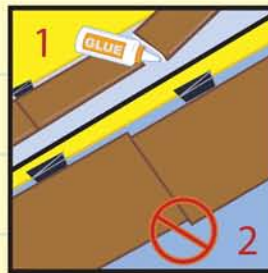


Tips & Techniques

Use the right underpad for installation. A vapour barrier underpad is required for installations in basements!

✓ The first row

Using shims/spacers, leave a 3/8" space from the wall or baseboard. Roll out a section of foam. Start by using full boards gluing the butt ends together. Apply glue to the groove side of the board. Clean up excess glue. End joints should be perfectly aligned.

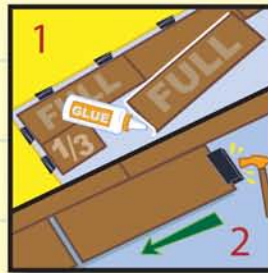


Tips & Techniques

Use the shims to lock in the first row by placing them on all three sides of the row along the wall!

✓ The second row

Start second row with 1/3rd of a board gluing it in place. Next, applying glue to groove side of a full board, install horizontally to above board and tap in board at the butt end using a tapping block with the notched side against the board. Clean up



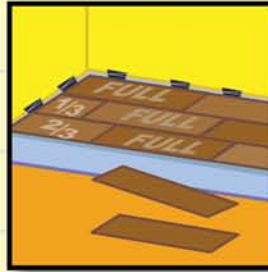
Tips & Techniques

Stop tapping once the butt ends of the two adjoining boards just touch!

Installing Floating Engineered Hardwood Flooring

Laying the floor

Start the third row with 2/3rds of a board and glue into place. Continue gluing and tapping horizontally using full boards to complete the row. On the fourth row, repeat as on the first row starting out with full boards. Continue the pattern on the starting board of each row: Full board, 1/3, 2/3, full board, 1/3, 2/3... etc. Continue placing expansion shims along the walls as each row is being installed. Clean

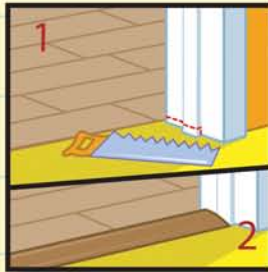


Tips & Techniques

Engineered floors with random length boards are laid out in the same way as solid wood floors! See *Solid Wood - laying floor*.

The final row

Rip last boards to fit leaving 3/8" gap from wall. When completed remove all expansion shims. Cut any door jams to fit floor underneath. Install any required reducers at door thresholds. Re-install baseboards and quarter-round.



Tips & Techniques

When re-installing baseboards and quarter round make sure to nail them to the wall and not to the floor!

Maintenance

Sweep or vacuum any dust and pick up any stray nails that can scratch your new floor. Place felt pads underneath furniture and carefully move back furniture by lifting it into place. Clean your floor on a regular basis.



Tips & Techniques

When buying a cleaner for your floor, make sure it says it is safe for engineered hardwood floors on the front label!

BRAMPTON HARDWOOD FLOORS.

59 Bramalea Rd.

(Steeles & Bramalea Rd - off Hwy 410 or 407)

Brampton, Ontario, L6T 2W4

Tel: 905-450-6268 or 1-866-450-6268

Fax: 905-796-1701

Email: info@bramptonhardwood.com



**BRAMPTON
HARDWOOD FLOORS**

HOURS OF OPERATION:

Monday to Friday : 7:00 AM to 8:00 PM

Saturday : 9:00 AM to 6:00 PM

Sunday : 11:00 AM to 5:00 PM

